



Philips
Hairdryer

2000 W



HP4997/00

The lightest AC dryer for salon results*

SalonDry Pro

Want to dry your hair like the professionals? The SalonDry Pro – with 2000 W of drying power coupled with a super professional AC motor – is the hairdryer you need if you're looking to recreate that salon style blow dry.

Beautifully styled hair

- Professional 2000 W for perfect salon results
- Professional AC motor for 50% longer lifetime
- Six flexible speed and temperature settings for full control
- Ultra narrow concentrator for precise styling
- Cool Shot sets your style

Less Hair Damage

- Ceramic element to smooth your hair
- Ion conditioning for shiny, frizz-free hair

Easy to use

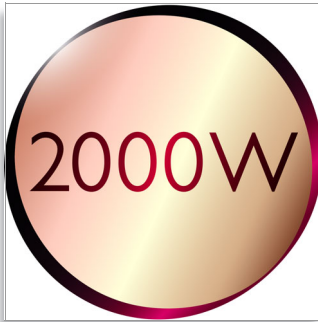
- Lightweight design for ergonomic use
- 2.5 m cord

PHILIPS

sense and simplicity

Highlights

Professional 2000 W



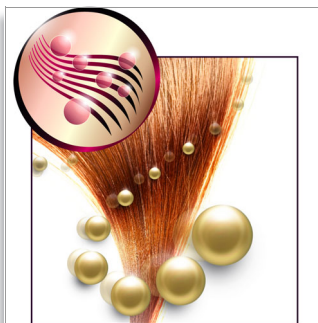
This 2000 W professional hairdryer creates a powerful airflow. The resulting combination of power and speed makes drying and styling your hair quicker and easier.

Professional AC motor



This type of motor is specially developed for the professional market and brings you several benefits. Most important, it has a longer lifespan than usual motors which lengthens the lifetime your hairdryer by 50%. On top of this, it also has an extra powerful airflow for fast and effective drying.

Ion conditioning



Give your hair an instant boost with ionic conditioning. Charged negative ions eliminate

static, condition the hair and smooth down the hair cuticles to intensify the hair's shine and glossiness. The result is hair that is beautifully shiny, smooth and frizz-free.

Ceramic element



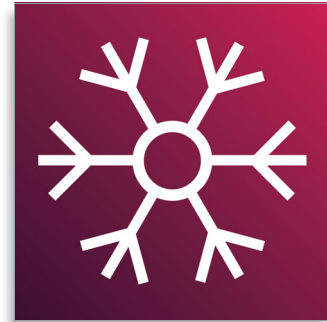
The ceramic element is included to prevent overdrying. It issues infrared heat, which has a gentle warmth which helps dry your hair from within and protects it from overdrying, without compromising on speed and effectiveness.

Six flexible speed and temperature settings



The speed and heat required can be easily adjusted to create the perfect style. Six different settings ensure full control for precise and tailored styling.

Cool Shot



A must-have professional function, the Cool Shot button provides an intense burst of cold air. It is used after styling to finish and set the style.

Ultra narrow concentrator 15 mm



The concentrator works by directing the flow of air through the ultra narrow opening on to specific areas. This results in very precise styling and is great for adjusting or to finish a style.

Lightweight design



This new design doesn't just look good. Lightweight and ergonomic, the hairdryer is easier to handle and results in improved styling flexibility.

Specifications

Technical specifications

- Wattage: 2000 W
- Cord length: 2.5 m
- Material housing: soft touch

Features

- Cool shot

- Dual voltage: No
- Ceramic coating
- Ion conditioning

Service

- 2-year guarantee



Issue date 2013-03-13

Version: 8.1.1

12 NC: 0000 000 00000

© 2013 Koninklijke Philips Electronics N.V.
All Rights reserved.

Specifications are subject to change without notice.
Trademarks are the property of Koninklijke Philips
Electronics N.V. or their respective owners.

www.philips.com

* compared to top 10 AC dryers (sales GFK'07)